

November 21, 2012

**NC Aquarium Roanoke Island  
Turtle Rehabilitation**  
Manteo, North Carolina  
MMPA Project No. 11007.01



**MOSE  
MAYER  
PHOENIX**  
ASSOCIATES, PA

**Addendum No. 2**

This Addendum, applicable to work designated herein, shall be understood to be and is an Addendum and as such shall be a part of and included in the Contract.

*Architecture*  
*Engineering*  
*Interior Design*  
*Site Services*

**Item No. One – Site Work**

**A. Concrete Plaza and Sidewalk Repair**

1. Refer to C1.1, A1.1 and Supplemental Drawing SD-C2
  - a. Remove concrete plaza to the extent shown on the attached drawing. Provide new concrete plaza and sidewalk as shown on the drawing, and extend to the existing sidewalk as shown on A1.1

**Item No. Two – Architectural Items**

**A. Exterior Wall Furring and Insulation**

1. Refer to Wall Section 7/A2.1
  - a. Exterior Zee furring is to be covered with sheathing tape recommended by the sheathing manufacturer to improve the weather resistance of the material.
  - b. Exterior sheathing shall be 1" extruded polystyrene with ship lap long edges. If installation produces gaps in joints or annular spaces of penetrations larger than 1/8", apply spray urethane foam to fill joints. All sheathing joints are to be taped.

3 2 8 E a s t  
M a r k e t S t r e e t  
S u i t e 2 0 0  
G r e e n s b o r o  
N o r t h C a r o l i n a  
2 7 4 0 1

**B. Siding and Trim**

1. Refer to new specification section 074600
  - a. Provide fiber cement siding, trim and installation as described in the specification included in this addendum.

P 336.373.9800  
F 336.373.0077

**C. Casework at Treatment Room 503**

1. Refer to Floor Plan, attached revised specification section 064023 Interior Architectural Woodwork, and new Bulletin Drawing #A1
  - a. Provide casework as shown on the new elevation and as specified.

**D. Owner Provided Items**

1. Refer to Floor Plan
  - a. The casework noted to be by Owner, refrigerator, freezer, washer/dryer, and holding tanks require no work by the contractor except coordination of the installation, timing, and cooperation with the Owner.
  - b. The sink by the Owner is described on the Plumbing drawings.

www.mmpa.com



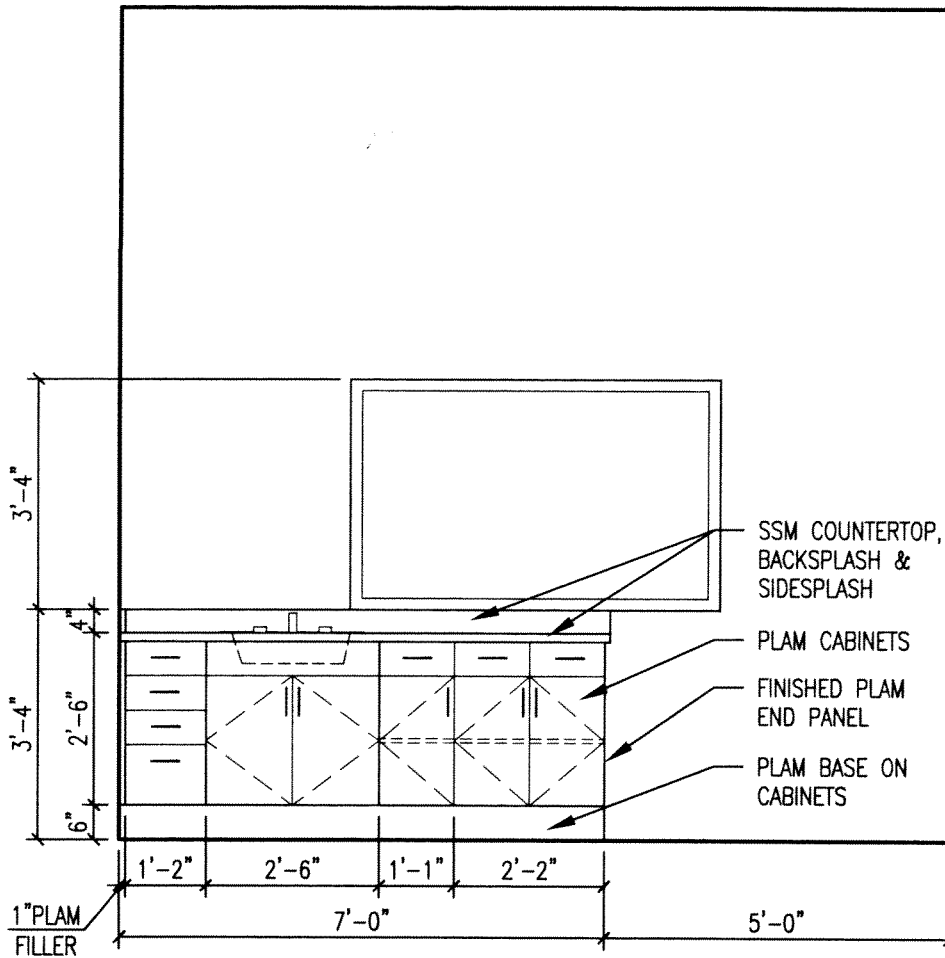
**E. Shingle Installation**

1. Refer to specification section 073113 Asphalt Shingles
  - a. Disregard the requirement for roofing cement to be placed between the layers of felt underlayment.

Attachments: Supplemental Drawing SD-C2, Specification Section 074600 Siding, Revised Specification Section 064023 Interior Architectural Woodwork, Bulletin Drawing #A1

**End of Addendum No. 2**

# BULLETIN DRAWING



8

A1.1

## CASEWORK ELEVATION @ TREATMENT 503

3/8" = 1'-0"

PROJECT NAME:

Roanoke Island Aquarium - Turtle Rehabilitation Center

REVISION NO: 1

DRAWING NO: 8

SHEET NO: A1.1



COMPLETE  
FACILITIES  
SOLUTIONS

MOSER  
MAYER  
PHOENIX  
ASSOCIATES, PA

328 E. Market Street  
Suite 200  
Greensboro, N. C. 27401  
Telephone: 336-373-9800  
Fax: 336-373-0077

SCO ID# 10-08584-01A

*This drawing represents a CHANGE in the  
CONTRACT DOCUMENTS and as such  
BECOMES a PART of the CONTRACT DOCUMENTS.*

DATE	11-21-2012
PROJECT NUMBER	11007.01
SCALE	AS NOTED

**BD# A1** SHEET: **1** OF: **1**

## SECTION 074600 - SIDING

## PART 1 - GENERAL

## 1.1 RELATED DOCUMENTS

- A. Drawings and general provisions of the Contract, including General and Supplementary Conditions and Division 01 Specification Sections, apply to this Section.

## 1.2 SUMMARY

- A. Section Includes:
  - 1. Fiber-cement siding and trim
- B. Related Sections:
  - 1. Division 06 Section "Rough Carpentry" for wood furring, grounds, nailers, and blocking.

## 1.3 ACTION SUBMITTALS

- A. Product Data: For each type of product indicated. Include construction details, material descriptions, dimensions of individual components and profiles, and finishes.

## 1.4 INFORMATIONAL SUBMITTALS

- A. Product Certificates: For each type of siding, from manufacturer.
- B. Warranty: Sample of special warranty.

## 1.5 CLOSEOUT SUBMITTALS

- A. Maintenance Data: For each type of siding and related accessories to include in maintenance manuals.

## 1.6 QUALITY ASSURANCE

- A. Source Limitations: Obtain each type, color, texture, and pattern of siding, including related accessories, from single source from single manufacturer.

## 1.7 DELIVERY, STORAGE, AND HANDLING

- A. Store materials in a dry, well-ventilated, weathertight place.

## 1.8 COORDINATION

- A. Coordinate installation with flashings and other adjoining construction to ensure proper sequencing.

## 1.9 WARRANTY

- A. Special Warranty: Standard form in which manufacturer agrees to repair or replace siding that fail(s) in materials or workmanship within specified warranty period.
  - 1. Failures include, but are not limited to, the following:
    - a. Structural failures including cracking, deforming, and fading.
    - b. Deterioration of metals, metal finishes, and other materials beyond normal weathering.
  - 2. Fading is defined as loss of color, after cleaning with product recommended by manufacturer, of more than 7 Hunter color-difference units as measured according to ASTM D 2244.
  - 3. Warranty Period: 25 years from date of Substantial Completion.

## PART 2 - PRODUCTS

### 2.1 FIBER-CEMENT SIDING

- A. General: ASTM C 1186, Type A, Grade II, fiber-cement board, noncombustible when tested according to ASTM E 136; with a flame-spread index of 25 or less when tested according to ASTM E 84.
  - 1. Manufacturers: Subject to compliance with requirements, provide products by one of the following:
    - a. Cemplank.
    - b. CertainTeed Corp.
    - c. James Hardie.
  - 2. Horizontal Pattern: Boards 7-1/4 to 7-1/2 inches (184 to 190 mm) wide in plain style.
    - a. Texture: Smooth.
  - 3. Factory Priming: Manufacturer's standard acrylic primer.

### 2.2 ACCESSORIES

- A. Decorative Accessories: Provide the following fiber-cement decorative accessories as indicated:
  - 1. Fasciae.
  - 2. Moldings and trim.
  - 3. Corner Boards
- B. Flashing: Provide stainless-steel flashing complying with Division 07 Section "Sheet Metal Flashing and Trim" at window and door heads and where indicated.
- C. Fasteners:
  - 1. For fastening to metal, use ribbed bugle-head screws of sufficient length to penetrate a minimum of 1/4 inch (6 mm), or three screw-threads, into substrate.

2. For fastening fiber cement, use stainless-steel fasteners.

### PART 3 - EXECUTION

#### 3.1 EXAMINATION

- A. Examine substrates for compliance with requirements for installation tolerances and other conditions affecting performance of siding and related accessories.
- B. Proceed with installation only after unsatisfactory conditions have been corrected.

#### 3.2 PREPARATION

- A. Clean substrates of projections and substances detrimental to application.

#### 3.3 INSTALLATION

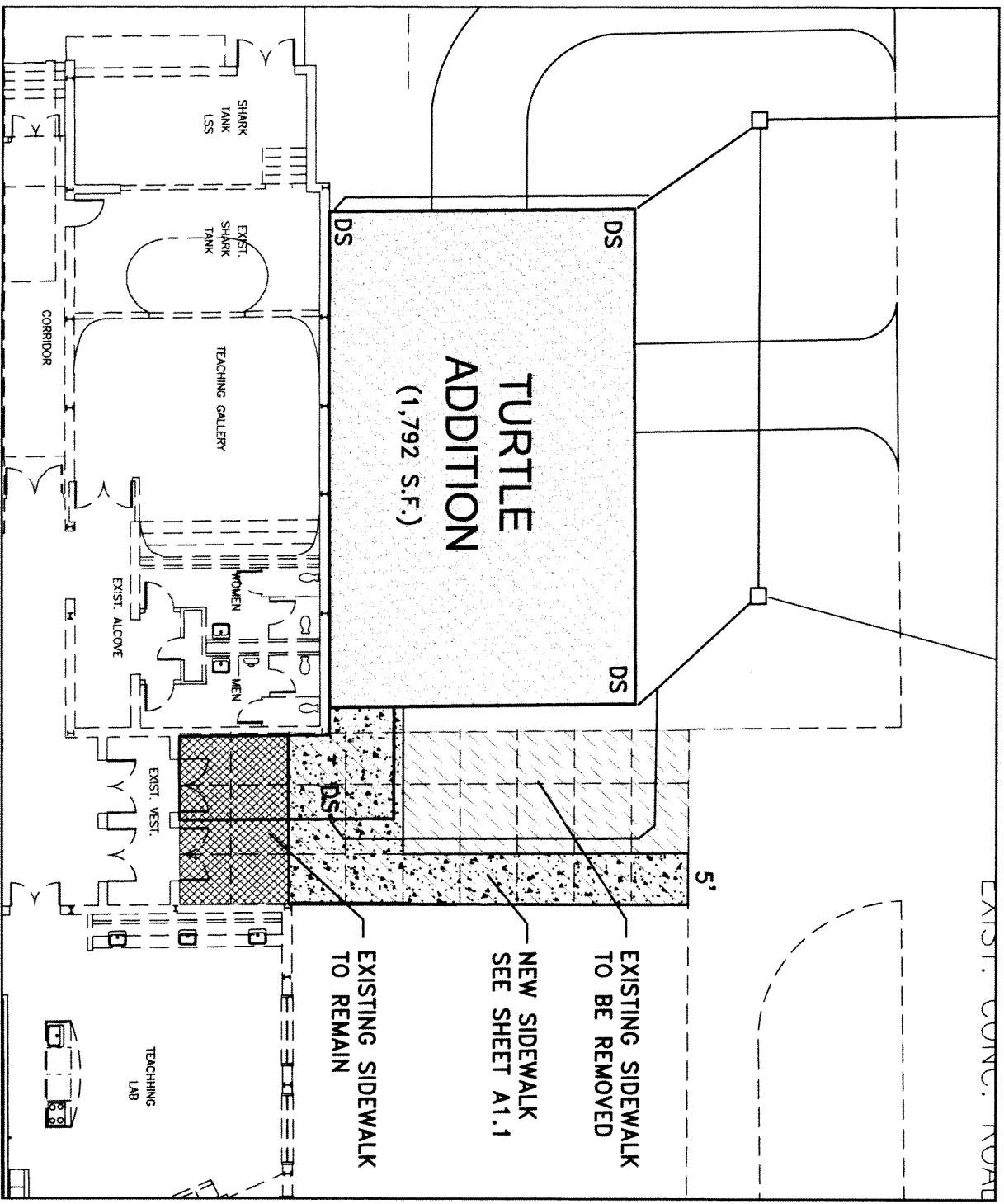
- A. General: Comply with siding manufacturer's written installation instructions applicable to products and applications indicated unless more stringent requirements apply.
  1. Do not install damaged components.
- B. Install fiber-cement siding and related accessories.
  1. Install fasteners no more than 24 inches (600 mm) o.c.
  2. Install screws into top edge for blind fastening
- C. Install joint sealants as specified in Division 07 Section "Joint Sealants" and to produce a weathertight installation.

#### 3.4 ADJUSTING AND CLEANING

- A. Remove damaged, improperly installed, or otherwise defective materials and replace with new materials complying with specified requirements.
- B. Clean finished surfaces according to manufacturer's written instructions and maintain in a clean condition during construction.

END OF SECTION 074600

# SUPPLEMENTAL DRAWING



**TURTLE  
REHAB  
CENTER**

374 AIRPORT ROAD  
MANTOE, N CAROLINA



**MOSER  
MAYER  
PHOENIX  
ASSOCIATES, PA**

COMPLETE  
FACILITIES  
SOLUTIONS  
328 E. Market Street  
Suite 200  
Greensboro, N.C. 27401  
Telephone 336-373-9800  
Fax 336-373-0077

SCALE N.T.S.  
DATE 11-15-2012 SD-C2

## SECTION 064023 - INTERIOR ARCHITECTURAL WOODWORK

## PART 1 - GENERAL

## 1.1 RELATED DOCUMENTS

- A. Drawings and general provisions of the Contract, including General and Supplementary Conditions and Division 01 Specification Sections, apply to this Section.

## 1.2 SUMMARY

- A. This Section includes the following:
  - 1. Plastic-laminate cabinets.
  - 2. Solid-surfacing-material countertops.
- B. Related Sections include the following:
  - 1. Division 06 Section "Rough Carpentry" for wood furring, blocking, shims, and hanging strips required for installing woodwork and concealed within other construction before woodwork installation.

## 1.3 DEFINITIONS

- A. Interior architectural woodwork includes wood furring, blocking, shims, and hanging strips for installing woodwork items unless concealed within other construction before woodwork installation.

## 1.4 SUBMITTALS

- A. Product Data: For panel products, high-pressure decorative laminate, adhesive for bonding plastic laminate, solid-surfacing material, cabinet hardware and accessories, and finishing materials and processes.
  - 1. Include data for fire-retardant treatment from chemical treatment manufacturer and certification by treating plant that treated materials comply with requirements.
- B. Shop Drawings: Show location of each item, dimensioned plans and elevations, large-scale details, attachment devices, and other components.
  - 1. Show details full size.
  - 2. Show locations and sizes of furring, blocking, and hanging strips, including concealed blocking and reinforcement specified in other Sections.
  - 3. Show locations and sizes of cutouts and holes for plumbing fixtures, faucets, soap dispensers, and other items installed in architectural woodwork.
  - 4. Show veneer leaves with dimensions, grain direction, exposed face, and identification numbers indicating the flitch and sequence within the flitch for each leaf.
- C. Samples for Initial Selection:
  - 1. Plastic laminates.
  - 2. PVC edge material.



3. Solid-surfacing materials.

- D. Product Certificates: For each type of product, signed by product manufacturer.
- E. Woodwork Quality Standard Compliance Certificates: AWI Quality Certification Program certificates.
- F. Qualification Data: For Installer.

#### 1.5 QUALITY ASSURANCE

- A. Fabricator Qualifications: Shop that employs skilled workers who custom-fabricate products similar to those required for the Project and whose products have a record of successful in-service performance.
- B. Quality Standard: Unless otherwise indicated, comply with AWI's "Architectural Woodwork Quality Standards" for grades of interior architectural woodwork indicated for construction, finishes, installation, and other requirements.
  - 1. Provide AWI Quality Certification Program labels and certificates indicating that woodwork, including installation, complies with requirements of grades specified.
- C. Fire-Test-Response Characteristics: Where fire-retardant materials or products are indicated, provide materials and products with specified fire-test-response characteristics as determined by testing identical products per test method indicated by UL, ITS, or another testing and inspecting agency acceptable to authorities having jurisdiction. Identify with appropriate markings of applicable testing and inspecting agency in the form of separable paper label or, where required by authorities having jurisdiction, imprint on surfaces of materials that will be concealed from view after installation.
- D. Preinstallation Conference: Conduct conference at Project site to comply with requirements in Division 01 Section "Project Management and Coordination."

#### 1.6 DELIVERY, STORAGE, AND HANDLING

- A. Do not deliver woodwork until painting and similar operations that could damage woodwork have been completed in installation areas. If woodwork must be stored in other than installation areas, store only in areas where environmental conditions comply with requirements specified in "Project Conditions" Article.

#### 1.7 PROJECT CONDITIONS

- A. Environmental Limitations: Do not deliver or install woodwork until building is enclosed, wet work is complete, and HVAC system is operating and maintaining temperature and relative humidity at occupancy levels during the remainder of the construction period.
- B. Field Measurements: Where woodwork is indicated to fit to other construction, verify dimensions of other construction by field measurements before fabrication, and indicate measurements on Shop Drawings. Coordinate fabrication schedule with construction progress to avoid delaying the Work.
  - 1. Locate concealed framing, blocking, and reinforcements that support woodwork by field measurements before being enclosed, and indicate measurements on Shop Drawings.
  - 2. Established Dimensions: Where field measurements cannot be made without delaying the Work, establish dimensions and proceed with fabricating woodwork without field measurements.

Provide allowance for trimming at site, and coordinate construction to ensure that actual dimensions correspond to established dimensions.

## 1.8 COORDINATION

- A. Coordinate sizes and locations of framing, blocking, furring, reinforcements, and other related units of Work specified in other Sections to ensure that interior architectural woodwork can be supported and installed as indicated.

## PART 2 - PRODUCTS

### 2.1 MATERIALS

- A. General: Provide materials that comply with requirements of AWI's quality standard for each type of woodwork and quality grade specified, unless otherwise indicated.
- B. Wood Species and Cut for Transparent Finish: Maple, plain sliced.
- C. Wood Products: Comply with the following:
  - 1. Recycled Content of Medium-Density Fiberboard and Particleboard: Provide products with an average recycled content so postconsumer recycled content plus one-half of preconsumer recycled content is not less than 20 percent.
  - 2. Medium-Density Fiberboard: ANSI A208.2, Grade MD, made with binder containing no urea formaldehyde.
  - 3. Softwood Plywood: DOC PS 1, Medium Density Overlay.
  - 4. Veneer-Faced Panel Products (Hardwood Plywood): HPVA HP-1, made with adhesive containing no urea formaldehyde.
- D. High-Pressure Decorative Laminate: NEMA LD 3, grades as indicated or, if not indicated, as required by woodwork quality standard.
  - 1. Manufacturer: Subject to compliance with requirements, provide high-pressure decorative laminates by one of the following:
    - a. Formica Corporation.
    - b. Nevamar Company, LLC; Decorative Products Div.
    - c. Wilsonart International; Div. of Premark International, Inc.
- E. Solid-Surfacing Material: Homogeneous solid sheets of filled plastic resin complying with ISSFA-2.
  - 1. Manufacturers: Subject to compliance with requirements, provide products by one of the following:
    - a. E. I. du Pont de Nemours and Company.
    - b. Formica Corporation.
    - c. LG Chemical, Ltd.
    - d. Samsung; Cheil Industries Inc.
    - e. Wilsonart International; Div. of Premark International, Inc.
  - 2. Type: Standard type, unless Special Purpose type is indicated.

3. Colors and Patterns: Equal to Corian Grade C. To be selected by Architect from manufacturer's full line.

## 2.2 FIRE-RETARDANT-TREATED MATERIALS

- A. General: Where fire-retardant-treated materials are indicated, use materials complying with requirements in this Article, that are acceptable to authorities having jurisdiction, and with fire-test-response characteristics specified.
  1. Do not use treated materials that do not comply with requirements of referenced woodworking standard or that are warped, discolored, or otherwise defective.
  2. Use fire-retardant-treatment formulations that do not bleed through or otherwise adversely affect finishes. Do not use colorants to distinguish treated materials from untreated materials.
  3. Identify fire-retardant-treated materials with appropriate classification marking of UL, U.S. Testing, Timber Products Inspection, or another testing and inspecting agency acceptable to authorities having jurisdiction.
- B. Fire-Retardant-Treated Lumber and Plywood by Pressure Process: Comply with performance requirements of AWPA C20 (lumber) and AWPA C27 (plywood). Use the following treatment type:
  1. Exterior Type: Organic-resin-based formulation thermally set in wood by kiln drying.
  2. Interior Type A: Low-hygroscopic formulation.
  3. Mill lumber after treatment within limits set for wood removal that do not affect listed fire-test-response characteristics, using a woodworking plant certified by testing and inspecting agency.
  4. Mill lumber before treatment and implement special procedures during treatment and drying processes that prevent lumber from warping and developing discolorations from drying sticks or other causes, marring, and other defects affecting appearance of treated woodwork.
  5. Kiln-dry materials before and after treatment to levels required for untreated materials.
- C. Fire-Retardant Particleboard: Panels complying with the following requirements, made from softwood particles and fire-retardant chemicals mixed together at time of panel manufacture to achieve flame-spread index of 25 or less and smoke-developed index of 25 or less per ASTM E 84.
  1. For panels 3/4 inch (19 mm) thick and less, comply with ANSI A208.1 for Grade M-2 except for the following minimum properties: modulus of rupture, 1600 psi (11 MPa); modulus of elasticity, 300,000 psi (2070 MPa); internal bond, 80 psi (550 kPa); and screw-holding capacity on face and edge, 250 and 225 lbf (1100 and 1000 N), respectively.
  2. For panels 13/16 to 1-1/4 inches (20 to 32 mm) thick, comply with ANSI A208.1 for Grade M-1 except for the following minimum properties: modulus of rupture, 1300 psi (9 MPa); modulus of elasticity, 250,000 psi (1720 MPa); linear expansion, 0.50 percent; and screw-holding capacity on face and edge, 250 and 175 lbf (1100 and 780 N), respectively.
  3. Product: Subject to compliance with requirements, provide "Duraflake FR" by Weyerhaeuser or other approved equal.
- D. Fire-Retardant Fiberboard: Medium-density fiberboard panels complying with ANSI A208.2, made from softwood fibers, synthetic resins, and fire-retardant chemicals mixed together at time of panel manufacture to achieve flame-spread index of 25 or less and smoke-developed index of 200 or less per ASTM E 84.
  1. Product: Subject to compliance with requirements, provide "Medite FR" by SierraPine Ltd.; Medite Div. or other approved equal.

### 2.3 CABINET HARDWARE AND ACCESSORIES

- A. General: Provide cabinet hardware and accessory materials associated with architectural cabinets, except for items specified in Division 08 Section "Door Hardware (Scheduled by Describing Products)."
- B. Frameless Concealed Hinges (European Type): BHMA A156.9, B01602, 135 degrees of opening, self-closing.
- C. Wire Pulls: Back mounted, solid metal, 4 inches long, and 5/16 inch in diameter.
- D. Adjustable shelf Standards and Supports and Shelf Rests: BHMA A156.9, B04013; metal, two-pin type with shelf hold-down clip.
- E. Drawer Slides: BHMA A156.9, B05091.
  - 1. Box Drawer Slides: Grade 1; for drawers not more than 6 inches (150 mm) high and 24 inches (600 mm) wide.
- F. Door Locks: BHMA A156.11, E07121.
- G. Drawer Locks: BHMA A156.11, E07041.
- H. Door and Drawer Silencers: BHMA A156.16, L03011.
- I. Exposed Hardware Finishes: For exposed hardware, provide finish that complies with BHMA A156.18 for BHMA finish number indicated.
  - 1. Satin Stainless Steel: BHMA 630.
- J. For concealed hardware, provide manufacturer's standard finish that complies with product class requirements in BHMA A156.9.

### 2.4 MISCELLANEOUS MATERIALS

- A. Furring, Blocking, Shims, and Hanging Strips: Softwood or hardwood lumber, kiln dried to less than 15 percent moisture content.
- B. Furring, Blocking, Shims, and Hanging Strips: Fire-retardant-treated softwood lumber, kiln dried to less than 15 percent moisture content.
- C. Anchors: Select material, type, size, and finish required for each substrate for secure anchorage. Provide nonferrous-metal or hot-dip galvanized anchors and inserts on inside face of exterior walls and elsewhere as required for corrosion resistance. Provide toothed-steel or lead expansion sleeves for drilled-in-place anchors.
- D. Adhesives, General: Do not use adhesives that contain urea formaldehyde.
- E. VOC Limits for Installation Adhesives and Glues: Use installation adhesives that comply with the following limits for VOC content when calculated according to 40 CFR 59, Subpart D (EPA Method 24):
  - 1. Wood Glues: 30 g/L.
  - 2. Contact Adhesive: 250 g/L.
- F. Adhesive for Bonding Plastic Laminate: Unpigmented contact cement.

1. Adhesive for Bonding Edges: Hot-melt adhesive or adhesive specified above for faces.

## 2.5 FABRICATION, GENERAL

- A. Interior Woodwork Grade: Unless otherwise indicated, provide Custom-grade interior woodwork complying with referenced quality standard.
- B. Wood Moisture Content: Comply with requirements of referenced quality standard for wood moisture content in relation to ambient relative humidity during fabrication and in installation areas.
- C. Sand fire-retardant-treated wood lightly to remove raised grain on exposed surfaces before fabrication.
- D. Fabricate woodwork to dimensions, profiles, and details indicated. Ease edges to radius indicated for the following:
  1. Corners of Cabinets and Edges of Solid-Wood (Lumber) Members 3/4 Inch (19 mm) Thick or Less: 1/16 inch (1.5 mm).
  2. Edges of Rails and Similar Members More Than 3/4 Inch (19 mm) Thick: 1/8 inch (3 mm).
  3. Corners of Cabinets and Edges of Solid-Wood (Lumber) Members and Rails: 1/16 inch (1.5 mm).
- E. Complete fabrication, including assembly, finishing, and hardware application, to maximum extent possible before shipment to Project site. Disassemble components only as necessary for shipment and installation. Where necessary for fitting at site, provide ample allowance for scribing, trimming, and fitting.
  1. Notify Architect seven days in advance of the dates and times woodwork fabrication will be complete.
  2. Trial fit assemblies at fabrication shop that cannot be shipped completely assembled. Install dowels, screws, bolted connectors, and other fastening devices that can be removed after trial fitting. Verify that various parts fit as intended and check measurements of assemblies against field measurements indicated on Shop Drawings before disassembling for shipment.
- F. Shop-cut openings to maximum extent possible to receive hardware, appliances, plumbing fixtures, electrical work, and similar items. Locate openings accurately and use templates or roughing-in diagrams to produce accurately sized and shaped openings. Sand edges of cutouts to remove splinters and burrs.
  1. Seal edges of openings in countertops with a coat of varnish.

## 2.6 PLASTIC-LAMINATE CABINETS

- A. Grade: Custom.
- B. AWI Type of Cabinet Construction: Flush overlay.
- C. Reveal Dimension: As indicated.
- D. Laminate Cladding for Exposed Surfaces: High-pressure decorative laminate complying with the following requirements:
  1. Horizontal Surfaces Other Than Tops: Grade HGS.
  2. Vertical Surfaces: Grade HGS.
  3. Edges: PVC edge banding, 0.12 inch (3 mm) thick, matching laminate in color, pattern, and finish.

- E. Materials for Semiexposed Surfaces:
  - 1. Surfaces Other Than Drawer Bodies: High-pressure decorative laminate, Grade VGS.
    - a. Edges of Plastic-Laminate Shelves: PVC edge banding, 0.12 inch (3 mm) thick, matching laminate in color, pattern, and finish.
    - b. For semiexposed backs of panels with exposed plastic-laminate surfaces, provide surface of high-pressure decorative laminate, Grade VGS.
  - 2. Drawer Sides and Backs: Solid-hardwood lumber.
  - 3. Drawer Bottoms: Hardwood plywood.
- F. Concealed Backs of Panels with Exposed Plastic Laminate Surfaces: High-pressure decorative laminate, Grade BKL.
- G. Colors, Patterns, and Finishes: Provide materials and products that result in colors and textures of exposed laminate surfaces complying with the following requirements:
  - 1. As selected by Architect from laminate manufacturer's full range in the following categories:
    - a. Solid colors, matte finish.
    - b. Solid colors with core same color as surface, matte finish.
    - c. Wood grains, matte finish.
    - d. Patterns, matte finish.
- H. Provide dust panels of 1/4-inch (6.4-mm) plywood or tempered hardboard above compartments and drawers, unless located directly under tops.

## 2.7 SOLID-SURFACING-MATERIAL COUNTERTOPS

- A. Solid-Surfacing-Material Thickness: 1/2 inch (13 mm).
- B. Colors, Patterns, and Finishes: Provide materials and products that result in colors of solid-surfacing material complying with the following requirements:
  - 1. As selected by Architect from manufacturer's full range, equal to Corian Grade C.
- C. Fabricate tops in one piece, unless otherwise indicated. Comply with solid-surfacing-material manufacturer's written recommendations for adhesives, sealers, fabrication, and finishing.
  - 1. Fabricate tops with shop-applied edges of materials and configuration indicated.
  - 2. Fabricate tops with loose backsplashes and end splashes for field application.
- D. Drill holes in countertops for plumbing fittings and soap dispensers in shop.

## 2.8 SHOP FINISHING

- A. Grade: Provide finishes of same grades as items to be finished.
- B. General: Finish architectural woodwork at fabrication shop as specified in this Section. Defer only final touchup, cleaning, and polishing until after installation.

- C. General: Shop finish transparent-finished interior architectural woodwork at fabrication shop as specified in this Section.
- D. General: Drawings indicate items that are required to be shop finished. Finish such items at fabrication shop as specified in this Section. Refer to Division 09 painting Sections for finishing architectural woodwork not indicated to be shop finished.
- E. Shop Priming: Shop apply the prime coat including backpriming, if any, for items specified to be field finished. Refer to Division 09 painting Sections for material and application requirements.
- F. Preparation for Finishing: Comply with referenced quality standard for sanding, filling countersunk fasteners, sealing concealed surfaces, and similar preparations for finishing architectural woodwork, as applicable to each unit of work.
  - 1. Backpriming: Apply one coat of sealer or primer, compatible with finish coats, to concealed surfaces of woodwork. Apply two coats to back of paneling and to end-grain surfaces. Concealed surfaces of plastic-laminate-clad woodwork do not require backpriming when surfaced with plastic laminate, backing paper, or thermoset decorative panels.

### PART 3 - EXECUTION

#### 3.1 PREPARATION

- A. Before installation, condition woodwork to average prevailing humidity conditions in installation areas.
- B. Before installing architectural woodwork, examine shop-fabricated work for completion and complete work as required, including removal of packing and backpriming.

#### 3.2 INSTALLATION

- A. Grade: Install woodwork to comply with requirements for the same grade specified in Part 2 for fabrication of type of woodwork involved.
- B. Assemble woodwork and complete fabrication at Project site to comply with requirements for fabrication in Part 2, to extent that it was not completed in the shop.
- C. Install woodwork level, plumb, true, and straight. Shim as required with concealed shims. Install level and plumb (including tops) to a tolerance of 1/8 inch in 96 inches (3 mm in 2400 mm).
- D. Scribe and cut woodwork to fit adjoining work, refinish cut surfaces, and repair damaged finish at cuts.
- E. Fire-Retardant-Treated Wood: Handle, store, and install fire-retardant-treated wood to comply with chemical treatment manufacturer's written instructions, including those for adhesives used to install woodwork.
- F. Anchor woodwork to anchors or blocking built in or directly attached to substrates. Secure with countersunk, concealed fasteners and blind nailing as required for complete installation. Use fine finishing nails or finishing screws] for exposed fastening, countersunk and filled flush with woodwork and matching final finish if transparent finish is indicated.

- G. Cabinets: Install without distortion so doors and drawers fit openings properly and are accurately aligned. Adjust hardware to center doors and drawers in openings and to provide unencumbered operation. Complete installation of hardware and accessory items as indicated.
  - 1. Install cabinets with no more than 1/8 inch in 96-inch (3 mm in 2400-mm) sag, bow, or other variation from a straight line.
  - 2. Fasten wall cabinets through back, near top and bottom, at ends and not more than 16 inches (400 mm) o.c. with No. 10 wafer-head screws sized for 1-inch (25-mm) penetration into wood framing, blocking, or hanging strips.
- H. Countertops: Anchor securely by screwing through corner blocks of base cabinets or other supports into underside of countertop.
  - 1. Align adjacent solid-surfacing-material countertops and form seams to comply with manufacturer's written recommendations using adhesive in color to match countertop. Carefully dress joints smooth, remove surface scratches, and clean entire surface.
  - 2. Install countertops with no more than 1/8 inch in 96-inch (3 mm in 2400-mm) sag, bow, or other variation from a straight line.
  - 3. Secure backsplashes to tops with concealed metal brackets at 16 inches (400 mm) o.c.
  - 4. Calk space between backsplash and wall with sealant specified in Division 07 Section "Joint Sealants."
- I. Touch up finishing work specified in this Section after installation of woodwork. Fill nail holes with matching filler where exposed.
- J. Refer to Division 09 Sections for final finishing of installed architectural woodwork.

### 3.3 ADJUSTING AND CLEANING

- A. Repair damaged and defective woodwork, where possible, to eliminate functional and visual defects; where not possible to repair, replace woodwork. Adjust joinery for uniform appearance.
- B. Clean, lubricate, and adjust hardware.
- C. Clean woodwork on exposed and semiexposed surfaces. Touch up shop-applied finishes to restore damaged or soiled areas.

END OF SECTION 064023